

# St Michael's Church of England Primary School Newsletter

**Friday 22nd March 2024**

---

**I have come that [you] may have life, and have it to the full' John 10:10,**

**[Therefore],**

**'Be strong and courageous. The Lord your God will be with you wherever you go.' Joshua 1:9**

*These biblical texts underpin our vision summary, 'Courage to Flourish in the Love of God'.*

*Jesus' words from the New Testament describe his desire for everyone to be a full and flourishing version of their created selves, experiencing life in all its vibrant fullness, individually and in community.*

*Our ambition is for everyone to encounter this fullness through the life and work of the school, whatever their background, beliefs or circumstances.*

*God's words to Joshua from the Old Testament illustrate how life, and learning, can be challenging, bringing setbacks and discouragement. These words inspire us to keep on going in those circumstances, confident that God watches over us and walks beside us.*

*The joining of these biblical texts is meaningful for the particular circumstances of our school community. It gives coherence to our aspirational vision that will grow courage and resilience as enablers of **'life in all its fullness'** for everyone.*

---



## ***Message from Mrs Roberts***

---

*Dear parents, carers and students,*

*What a wonderful last week of term. It was fantastic to see so many of you in school this week.*

*We started the week with an amazing Brass Concert. The children were absolutely brilliant and I need to say a huge thank you to Mrs Hadlington for all of the inspiring work that she does with them.*

*We then had our two Headteacher Awards. As always, it was wonderful having the opportunity to share the children's successes.*

*Year 3 were amazing during their service at Church. We really value being able to share this experience with you. As always, thank you to Reverend Ruth for giving us this opportunity.*

*We then finished the week with the Bunny Hop, Easter Bonnet Parade and Eggstravaganza. Thank you for all of your contributions to these events. Thank you to the governors for coming to share this time with us as well. As soon as we know how much we have raised for Birmingham Hospice, we will add this to the newsletter.*

*Remember that the children return on Tuesday 9th April.*

*Easter blessings to you all,*

## HOLIDAY PROVISION AT BIRMINGHAM CATHEDRAL: 03-05 APRIL 2024

---

*Birmingham Cathedral has the following exciting offer for Easter holiday provision on 03-05 April.*

*Here is the link to book: <https://birminghamcathedral.com/easter-club-2024/>*

---



### Queries or concerns

---

*If you have a query or concern, please remember to speak to the classteacher in the first instance. You can arrange this by either phoning or emailing the office who will pass on the message. The class teacher will then get in touch with you as soon as possible. Please bear in mind that this will be before or after school as they are teaching throughout the day.*

---

### Dogs on the playground

---

*A quick reminder please that we cannot have any dogs on the playground. This is to ensure the safety of all of our children.*

---

## Social Media

---

*A quick plea, that if you have a query or concern regarding processes at the school that you contact us directly rather posting on social media. This way accurate information will be shared.*

*We are trying to teach the children how to use social media safely and responsibly so your support with this is appreciated.*

*Thank you for those parents and carers who continue to bring this to our attention.*

---

## Scotland Lane

---

*I have been contacted by Preet Kaur Gill (MP for Edgbaston) this week. She has received complaints from residents of Scotland Lane in Bartley Green about parents/carers parking on the road. They have said that parents and carers of the school are parking over dropped kerbs, grass verges, and in front of houses. There are a number of elderly residents and residents with disabilities that this is impacting on. Can we please ask that you are mindful about where you park during pick up and drop off.*

---

## Key Dates

---

*Monday 8th April - Teacher Training Day*

*Tuesday 9th April - children return to school.*

*Tuesday 9th April - Eco Team maintaining the local orchards.*

*Thursday 11th April - whole school at St Michael's Church.*

*Tuesday 16th April - Year 5 Eid Assembly.*

*Tuesday 16th April - Year 5 French taster sessions with Hillcrest (at St Michael's School).*

*Thursday 18th April - Key Stage 2 Quidditch Day.*

*Thursday 2nd May - Key Stage 1 Quidditch Day.*

*Thursday 2nd May - meeting for new Reception children (9.15am and 2.30pm).*

*Friday 3rd May - meeting for new Nursery children (9.15am and 2.30pm).*

*Monday 6th May - Bank Holiday (school closed).*

*Tuesday 7th May - Reception at Bartley Green Library.*

*Tuesday 7th May - Year 5 River Trip at Severn Valley Country Park.*

*Week beginning 13th May - Key Stage 2 SATs week.*

*Friday 17th May - Photographer in school.*

*Friday 17th May - Year 6 Pizza afternoon.*

*Monday 20th May - Year 5 Celebrating the Pentecost at St Michael's Church (adults invited).*

*Thursday 23rd May - Year 4 at The Botanical Gardens.*

*Thursday 23rd May - Reception and Key Stage 1 Headteacher Awards.*

*Friday 24th May - Key Stage 2 Headteacher Awards.*

*Friday 24th May - Year 2 at Bartley Green library.*

*Friday 24th May - Year 3 at Black Country Museum.*

*Friday 24th May - Last day of the half term.*

*Monday 3rd June - Teacher Training Day.*

*Tuesday 4th June - children return to school.*

*Week beginning 3rd June - Year 4 Multiplication TablesCheck.*

*Week beginning 10th June - Key Stage 1 Phonics Screening Check.*

---

## Nursery Places

---

*We are currently taking applications for September 2024. Please contact the office either in person or via telephone on 0121 464 4345 if you would like further information.*

---

## Attendance





---

*The whole school's attendance target is 96%. The whole school attendance for the year so far is **94.1%**. Unfortunately, our persistent absence is **16.4%**. Please ensure your child comes to school every day.*

*So far this academic year, we have had 18 families taking unauthorised leave in term time (holidays). This has resulted in £2932 in fixed penalty notices issued by Birmingham City Council. We ask that families do not take leave in term time as these will not be authorised by school.*

---

## **Class Attendance - for this year so far!**

---

*RG - 93.1%*

*RS - 90.4%*

*1F - 92.7%*

*1M - 91.7%*

*2K - 92.5%*

*2R - 94.3%*

*3D - 94.4%*

*3T - 95.4%*

*4J - 93.9%*

4R - 96.4%

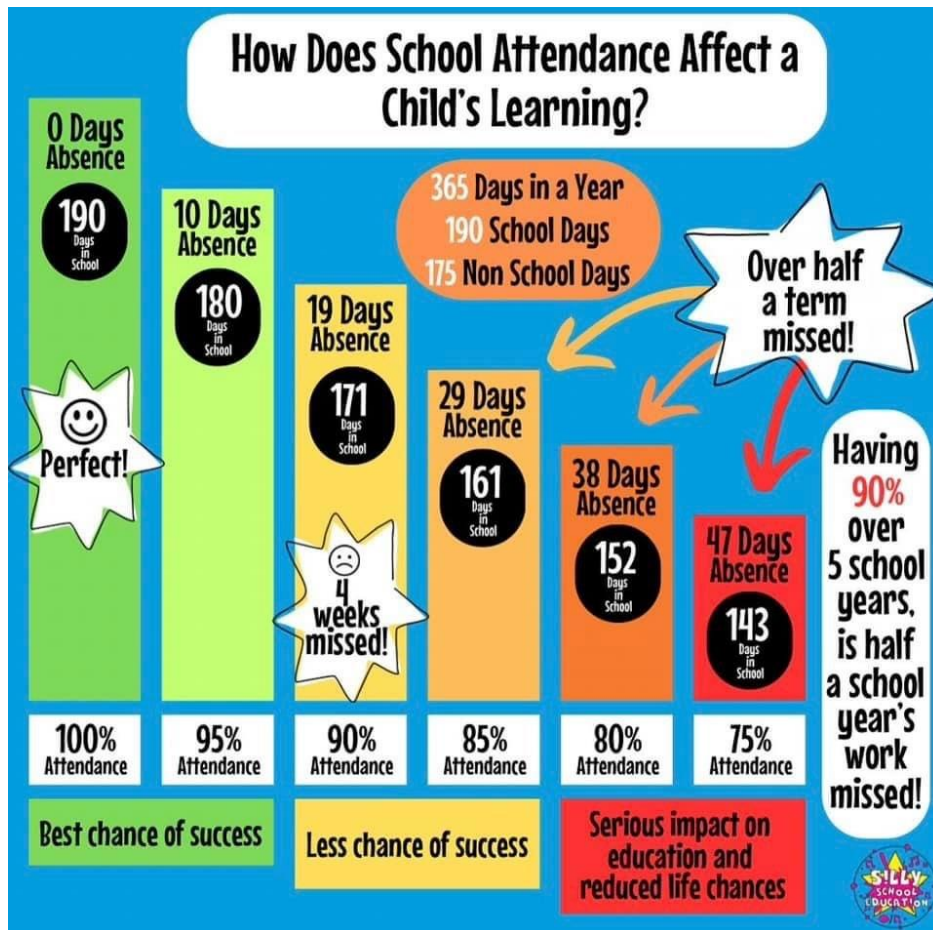
5F - 94%

5H - 94.9%

6H - 94.8%

6L - 93.7%

Since September 2023, we have had an increase in the number of children arriving to school late. When we have added these minutes up, they total 84 days worth of missed learning. Children must be in school and ready to learn promptly each day by 8:45am. Just a reminder that gates open at 8:35am.





---

*NHS guidance for parents about illnesses and when their child should be in school or kept at home*

*The guidance can be found below:*

<https://www.nhs.uk/live-well/is-my-child-too-ill-for-school/>

*Action For Children - Advice For Parents On Children Vaping*

*The guidance can be found below:*

<https://parents.actionforchildren.org.uk/behaviour/challenging-behaviour/im-worried-about-my-child-vaping/>

---

## Times Tables Rockstars



## Key Stage 2 TTRS Tournaments

---

*Key Stage Two*

*Year Four*

*If you need your child's TTRS login please speak to your class teacher.*

---

## Top 5 Players Key Stage 2

### Headteacher Awards

---

*The following children were nominated by the adults in their classroom for consistently showing the school values, positive learning behaviour and outstanding behaviour throughout the half term .*

*RG*

*RS*

---

### Nursery

### Reception

### Year 1

---

*1F*

*1M*

---

### Year 2

---

*2K*

2R

---

**Year 3**

---

3D

3T

---

**Year 4**

---

4J

4R

---

**Year 5**

---

5F

5H

---

**Year 6**

---

6H

6L

---

**What is happening in the classroom?**

**Nursery**

**Reception**

---

RG

RS

1F

1M

---

**Year 2**

---

*2K*

*2R*

---

**Year 3**

---

*3D*

*3T*

---

**Year 4**

---

*4J*

*4R*

---

## Year 5

---

5H

5F

---

## Year 6

---

Year 6

---

## Measles

---

*As you may be aware, across Birmingham there has been an outbreak of measles. Please read the following information which has been issued:*

---

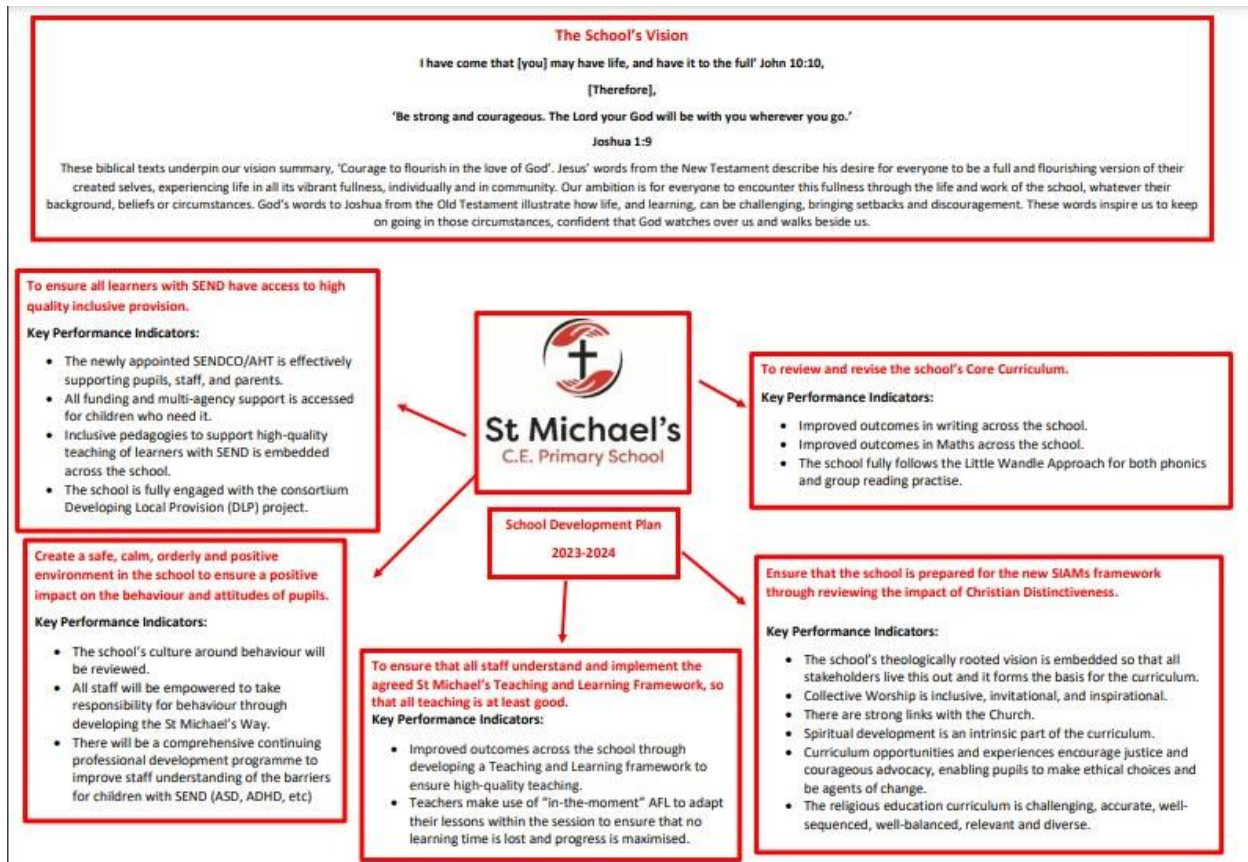
- *There's no specific medical treatment for measles, so it's important to get vaccinated as it's the best protection against becoming seriously unwell.*
  - *Measles usually starts with cold-like symptoms, followed by a rash a few days later.*
- *You should ask for an urgent GP appointment or get help from NHS 111 if you think you or your child may have measles.*
  - *Don't go to the GP or any other healthcare setting without calling them first.*
- *If your child has been diagnosed with measles by a doctor, they should stay off nursery or school for at least 4 days from when the rash first appears. They should also avoid close contact with babies and anyone who is pregnant or has a weakened immune system.*

- *Parents can book a free vaccine through the GP but if a child has already been vaccinated it is very unlikely that they have measles. 'It's fine to send your child to school with a minor cough or common cold, provided they don't have a temperature'. The incubation period is the length of time it can take to develop the illness after being in contact with someone with measles. For measles, the incubation period can be up to 21 days.*

## School Development Plan

*Please click on the link below to see this year's School Development Plan.*

### School Develop Plan



## What you need to bring to school

---

*A reminder of what to bring to school:*

✓ *A water bottle (please make sure it has your name on it). This should only have water in it and have a pop up top (not a screw top as if these fall over on the desks, they will ruin the children's work).*

✓ *A school bag or bookbag.*

✓ *A healthy fruit snack for breaktime (Nursery, Reception, Year 1 and Year 2 are provided with this).*

✓ *You can bring your scooter or bike to school if you wish. Please remember to wear a helmet and not to ride them whilst on school grounds.*

*X As always, please remember not to bring in any toys or stationery from home, unless it has been specifically requested by your teacher.*

*X No non-prescribed medication. Any medication that has been prescribed must be handed by the parent/carer to the school office staff who will ask you to complete a medication form detailing permission and dosage.*

---

## Medical and Dietary Information

---

*It is very important that we have up-to-date medical information including new Care Plans so we will be sending these out for you to review, complete and return. Any other updated health information should be sent in via the school office.*

*Please remember to inform the school of any changes to your child's medical or dietary needs.*

*Please also ensure that any prescribed medication, including an inhaler or EpiPen, is in-date and in school - it is parents responsibility to ensure this.*

---

## Free School Meals, Toast and Price Changes

---

*All children in Year's Reception - Year 2 are entitled to a 'Universal Free School Meal'.*



*When a child enters Year 3 this entitlement ends. If you would like your child to receive a school dinner your will need to:*

---

- Check you eligibility for a FSM here: [Online FSM Application \(cloudforedu.org.uk\)](https://cloudforedu.org.uk) School will be notified of the outcome of your application and proceed accordingly.*
  - Top up your 'School Food United' account to ensure there are funds to pay for your child's meals. The price for a school meal for the academic year 23/24 is £2.80 per day. Remember that these need to be ordered by **8.30 am** each day.*
  - We will no longer be accepting cash for toast, this will also need to be ordered each down through 'School Food United' The cost per day is 25p. Children will receive their toast at their break time between around 10.30am. Remember that these need to be ordered by **8.30 am** each day.*
  - We sent out guidance of how to create/use your 'School Food United' app via Arbor last week - if you require any further assistance please speak to a member of the school office.*
- 

## **Birthdays**

---

***Natasha's Law** came into effect on 1st October 2021. We appreciate that there may be some special times throughout the year when children may wish to bring sweets or chocolate in to share with their friends (e.g birthdays), please may we ask that children only bring in prepacked sweets such as Haribos which can then be handed out at the end of the day before children go and see their parents or guardians. Please understand that we cannot accept any homemade or individual sweets as this will not comply with Natasha's Law or current allergen requirements.*

---

## **Nut Free School**

---

*A reminder that the school is a nut-free zone as several children and members of staff have severe nut allergies. Please make sure that no nuts are brought to school and please check the ingredients on packets carefully. Thank you for helping us to keep all our community safe.*

---

## School Uniform

---

- *White polo shirt (with/without logo).*
  - *Red sweatshirt or cardigan (with or without logo).*
  - *Grey or black trousers, skirt or pinafore.*
  - *Red and white check dress (summer).*
  - *Grey or black shorts (summer).*
  - *Black shoes.*
- 



## P.E Uniform

---

- *Red or black shorts.*
  - *White t-shirt (with or without the school logo).*
  - *Black bumps/trainers.*
  - *Black tracksuit bottoms for outdoor games in winter.*
-

---

*Pumps are needed for indoor PE and must come in a separate bag for children to change into for the lesson. Trainers are not to be worn inside. Please make sure that your child has a pair of pumps onsite in case the weather means we need to do P.E inside.*

*You can also purchase a hoodie with the school logo on for P.E. from the office. This is not compulsory.*

---



## Labelling

---

*We understand how much a new uniform and school items cost and we try our best to ensure the children look after their clothing and bags. Please label your child's clothing, bags, lunch boxes, shoes and water bottles to help us return lost items to their owner.*

---

## Contact Details

---

### ***Telephone Numbers***

*Schools should hold two contact numbers for emergencies for each child. Please ensure these are up to date on your Arbor account.*

### ***Email Address***

*We communicate with parents and carers through email. Please do check your email address is up to date on Arbor.*

---

## **Twitter/X**

---

*Please follow us on:*

*@stmichaelsb32*

---