

St Michael's Church of England Primary School Newsletter

Friday 12th April 2024

I have come that [you] may have life, and have it to the full' John 10:10,

[Therefore],

'Be strong and courageous. The Lord your God will be with you wherever you go.' Joshua 1:9

These biblical texts underpin our vision summary, 'Courage to Flourish in the Love of God'.

Jesus' words from the New Testament describe his desire for everyone to be a full and flourishing version of their created selves, experiencing life in all its vibrant fullness, individually and in community.

Our ambition is for everyone to encounter this fullness through the life and work of the school, whatever their background, beliefs or circumstances.

God's words to Joshua from the Old Testament illustrate how life, and learning, can be challenging, bringing setbacks and discouragement. These words inspire us to keep on going in those circumstances, confident that God watches over us and walks beside us.

*The joining of these biblical texts is meaningful for the particular circumstances of our school community. It gives coherence to our aspirational vision that will grow courage and resilience as enablers of **'life in all its fullness'** for everyone.*



Message from Mrs Roberts

Dear parents, carers and students,

It's great to be back after the Easter break. I hope that everyone had a wonderful time celebrating and enjoying the holiday with their families and loved ones.

Our value for this half term is trust. During Collective Worship this week, we looked at the story The Road to Emmaus. The story teaches us about trusting in what we believe, trusting new friends and ideas, and trusting to be kind to others. It reminds us that sometimes, when we trust, we can be surprised by wonderful things that happen.

I do hope that all of the school community that celebrated Eid al-Fitr this week had a joyous and blessed celebration.

Eid Mubarak to you and your loved ones!

I hope that you all have a lovely weekend.

Thank you for your continued support and cooperation.

HOW YOUR MONEY HELPS



£336



could pay for a whole day of community nurses care, giving patients and families the support they need in the comfort of their own homes.

£495



could pay for 24 hours of nursing support for a person being cared for on one of our inpatient units.

£5,950



could pay for someone to have round-the-clock expert palliative and end of life care on one of our inpatient units.

It costs **£16,646,139** to run both hospice sites per year, which equates to:

£1,250,015
per month

£288,465
per week

£41,096
per day

£1,712
per hour

40% of our costs need to be covered through fundraised income.



89p in every £1 raised is spent on clinical and support services.

HOW YOUR MONEY HELPS



£20



could buy a teddy bear with a recording of a loved one's voice for a bereaved child to treasure as a keepsake.

£38



will pay for one hour of our Living Well Centre services supporting people to live well, manage their symptoms and take part in therapeutic activities.

£53



pays for a bereavement support session to help a family member cope with the loss of a loved one.

£84



pays for a community nurse to visit someone at home, helping them manage their symptoms and coordinating their care.

£90



pays for a specialist bereavement support session to help a child coping with the loss of a loved one.

£157



covers the cost of a home visit from an occupational therapist helping people to be as independent as possible and keep doing everyday things – such as cooking a family meal or going to the shops.

Phonics

At St Michael's, we teach our children to read using a scheme called Little Wandle which is a systematic and synthetic phonics programme. We teach this programme from Nursery to Year 2. We have uploaded lots of useful resources onto the phonics page of our school website which you can use at home. [Phonics Resources](#)

You can also access the Little Wandle website which has lots of videos which explain how we teach reading and how to pronounce the sounds. [Little Wandle Website](#)

Year 1 Phonics Screening Check

All children in Year 1 will complete the Phonics Screening Check during the week of the 10th June. This is a check of your child's phonics knowledge. The Phonics Screening Check contains 40 words divided into two sections of 20 words. Both sections contain a mixture of real words and pseudo-words (alien words).

The check is designed to give teachers information on how your child is progressing in phonics. It will help to identify whether your child needs additional support at this stage so that they do not fall behind in this vital early reading skill. There is lots of useful information about the Phonics Screening Check for Year 1 parents on our website. [Phonics Screening Check Information](#)

If you have any questions about phonics or the Phonics Screening Check, please speak to your child's class teacher or to Mr Bhatti our Deputy Headteacher.

Queries or concerns

If you have a query or concern, please remember to speak to the classteacher in the first instance. You can arrange this by either phoning or emailing the office who will pass on the message. The class teacher will then get in touch with you as soon as possible. Please bear in mind that this will be before or after school as they are teaching throughout the day.

Scotland Lane

I have been contacted by Preet Kaur Gill (MP for Edgbaston) this week. She has received complaints from residents of Scotland Lane in Bartley Green about parents/carers parking on the road. They have said that parents and carers of the school are parking over dropped kerbs, grass verges, and in front of houses. There are a number of elderly residents and residents with disabilities that this is impacting on. Can we please ask that you are mindful about where you park during pick up and drop off.

Key Dates

Tuesday 16th April - Year 5 Eid Assembly.

Tuesday 16th April - Year 5 French taster sessions with Hillcrest (at St Michael's School).

Thursday 18th April - Key Stage 2 Quidditch Day.

Thursday 2nd May - Key Stage 1 Quidditch Day.

Thursday 2nd May - meeting for new Reception children (9.15am and 2.30pm).

Friday 3rd May - meeting for new Nursery children (9.15am and 2.30pm).

Monday 6th May - Bank Holiday (school closed).

Tuesday 7th May - Reception at Bartley Green Library.

Tuesday 7th May - Year 5 River Trip at Severn Valley Country Park.

Week beginning 13th May - Key Stage 2 SATs week.

Friday 17th May - Photographer in school.

Friday 17th May - Year 6 Pizza afternoon.

Monday 20th May - Year 5 Celebrating the Pentecost at St Michael's Church (adults invited).

Thursday 23rd May - Year 4 at The Botanical Gardens.

Thursday 23rd May - Reception and Key Stage 1 Headteacher Awards.

Friday 24th May - Key Stage 2 Headteacher Awards.

Friday 24th May - Year 2 at Bartley Green library.

Friday 24th May - Year 1 at Black Country Museum.

Friday 24th May - Last day of the half term.

Monday 3rd June - Teacher Training Day.

Tuesday 4th June - children return to school.

Week beginning 3rd June - Year 4 Multiplication Tables Check.

Week beginning 10th June - Key Stage 1 Phonics Screening Check.

Nursery Places

We are currently taking applications for September 2024. Please contact the office either in person or via telephone on 0121 464 4345 if you would like further information.

Attendance





*The whole school's attendance target is 96%. The whole school attendance for the year so far is **94.1%**. Unfortunately, our persistent absence is **16.4%**. Please ensure your child comes to school every day.*

So far this academic year, we have had 18 families taking unauthorised leave in term time (holidays). This has resulted in £2932 in fixed penalty notices issued by Birmingham City Council. We ask that families do not take leave in term time as these will not be authorised by school.

Class Attendance - for this year so far!

RG - 93.1%

RS - 90.4%

1F - 92.7%

1M - 91.7%

2K - 92.5%

2R - 94.3%

3D - 94.4%

3T - 95.4%

4J - 93.9%

4R - 96.4%

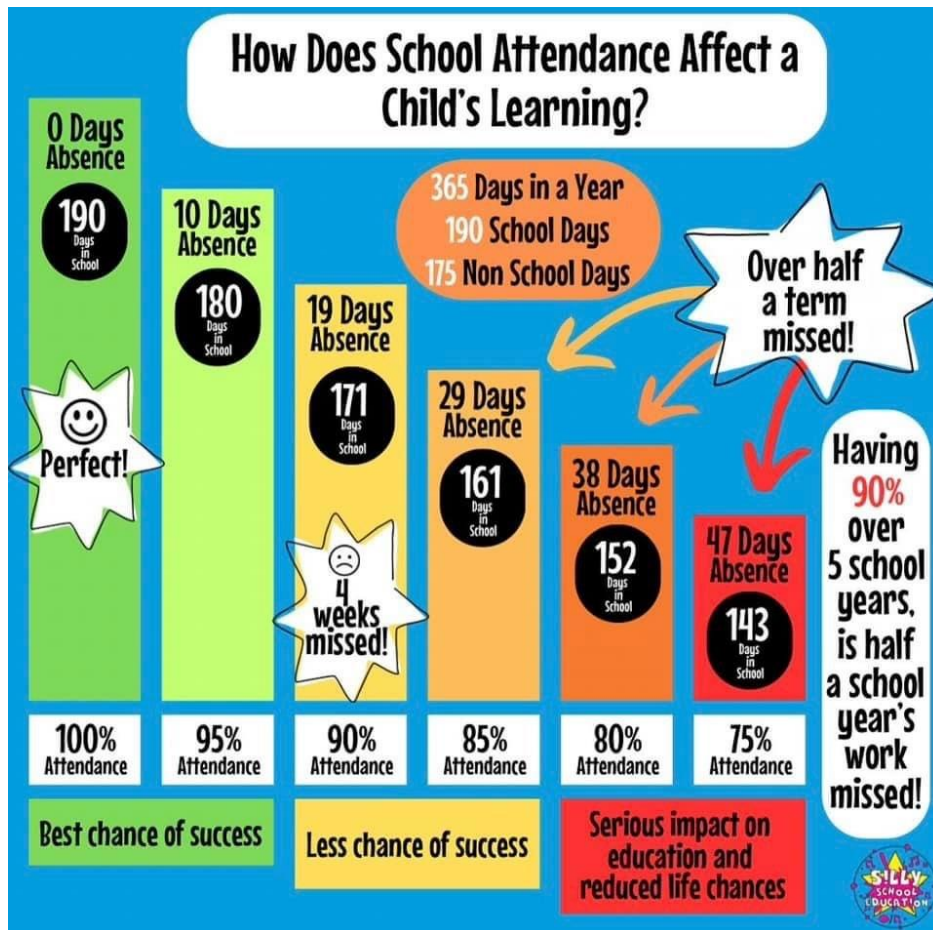
5F - 94%

5H - 94.9%

6H - 94.8%

6L - 93.7%

Since September 2023, we have had an increase in the number of children arriving to school late. When we have added these minutes up, they total 84 days worth of missed learning. Children must be in school and ready to learn promptly each day by 8:45am. Just a reminder that gates open at 8:35am.



NHS guidance for parents about illnesses and when their child should be in school or kept at home

The guidance can be found below:

<https://www.nhs.uk/live-well/is-my-child-too-ill-for-school/>

Action For Children - Advice For Parents On Children Vaping

The guidance can be found below:

<https://parents.actionforchildren.org.uk/behaviour/challenging-behaviour/im-worried-about-my-child-vaping/>

Times Tables Rockstars



Key Stage 2 TTRS Tournaments

Key Stage Two

3T won the Easter Holiday Tournament

Year Four

4R won the Easter Holiday Tournament

If you need your child's TTRS login please speak to your class teacher.

Top 5 Players Key Stage 2

1. Tayon 4J

2. Yoadan 6H

3. Brook 3D

4. Areng 4J

5. Alex 5H

Stars of the Week

The following children were nominated by the adults in their classroom this week.

Nursery

Seyoum - For having a fantastic first week in nursery, learning rules and routines and playing really well with others.

Chidubem - For always showing wow walking around school and being a role model for the other children.

Reception

RG-

Abigail- for WOW walking and being a role model to her peers.

Victor- for settling into RG really well in his second week in our school.

RS

Mason- Mason has been trying really hard this week to make good choices and has put alot of effort into his work.

Jayden- For trying really hard in handwriting to keep his writing on the lines.

Year 1

1F

Jack - for fantastic ideas and imagination in English.

Ben - for his amazing contribution during maths input.

1M

Cordell for a fantastic week in Year 1 and showing a great attitude to learning.

Kizhan for always being helpful and showing respect.

Year 2

2K -

Connie - for working hard in lessons this week and staying focused.

Ava - For being a role model. Ava always has lovely manners and shows Wow Walking.

2R

Thomas- for working really hard in lessons this week and being responsible and sensible.

Tien- For settling in beautifully into the class and being a keen learner.

Year 3

3D

Theo - for having a positive attitude to learning.

Amelia - for a great first week back and contributing in lesson.

3T

Jensen - for coming back with a positive attitude to learning. We have noticed a massive difference in Jensen and he is contributing well in lessons and trying hard in his work.

Noah HL- for his perseverance in a challenging ART lesson. He concentrated well and worked with wire, bending and twisting it to create the form of a fish.

Year 4

4J

Elijah - For his skills in Tag Rugby.

Myles - For his skills in Tag Rugby.

4R

Dara- for coming back to school well and working hard.

George- for coming back to school well and working hard.

Year 5

5F

Dylan - for the use of excellent use vocabulary in our English lesson and contributing to classroom discussions

Rosie - for amazing effort in our Maths lessons working with perimeter and making great progress with column addition

5H

Joel - for giving good explanations during our maths lessons and using the correct mathematical vocabulary

Ivy - for concentrating during lessons and making good choices

Year 6

6H

Charlie -for a fantastic explanation for his percentages work

Olivia F: for taking every opportunity possible to develop her reading.

6L:

Megan: for starting the term in such a positive and wonderful manner and having such a brilliant attitude towards learning.

Caylab: for brilliant independent learning in maths and English. Well done!

Lunchtime Stars

These children have been nominated by the adults on the playground for being excellent role models.

Reception

Theodore J

Araeyah

Year 1

Harley

Year 2

Leighton

Belle

Year 5

Ellora - for always exhibiting excellent behaviour.

Viola - for always being a great role model.

Year 6

Jack - for always being so helpful.

Lydia - for always being an excellent role mode.

What is happening in the classroom?

Nursery

This week the children have returned to school with lots of stories of their Easter break! It has been lovely to hear everything they have been getting up to!

We were very excited to hear that our new topic is going to be "On The Farm". The children have enjoyed learning about different types of farms, and what the farmer does on these farms. We have used our cutting skills to make split pin farm animals and enjoyed dressing up as different customers for the new farm shop role play area. All the children enjoyed some messy play with the paint and tractor tracks and had fun splashing in puddles in the rain with their all in one suits and wellies.

We have had a lovely first week back and are excited to see what farm activities we will have next week!

Reception

RG- In Reception this week we have been learning about patterns in maths. Children have been making, copying and continuing different patterns. We have also been learning about what plants need to help them grow as well as labelling different parts of a plant.

RS

In Literacy we have started to explore what our new story is about. 'Joe' wrote us a letter and gave us a seed with some gardening tools. We have been predicting what the story could be about. We are excited to listen to the story next week to see if any of our predictions are correct.

1F

Welcome back and hope you have all enjoyed the Easter break.

This week in English we have started our new book called The Secret of Black Rock. The children made predictions based on clues that were hidden around the classroom. In history the children have been looking at castles, with a focus Weoley castle. The children have enjoyed planting seeds in science where we will wait and observe for signs germination.

1M

This week the children really enjoyed learning about Weoley Castle. The children predicted what they thought it looked like by drawing some fantastic pictures. We looked at the different features and explored the castle ruins. We also looked at our seeds that we planted to see if anything had grown and we spotted some cress growing.

Year 2

2K

Welcome back. We hope you had a lovely break over the Easter holiday. We are now in the final term of Year 2 which is very sad to say. This week we have started learning about fractions in maths. We have been looking at equal amounts and we have also begun to look at half. In English we have started our new book 'The King who Banned the Dark.' We are learning over the next few weeks how to write a persuasive letter.

In Science we are starting to learn all about animals and their habitats and our History topic is significant individuals. This week we have been learning all about Mathew Bolton.

2R

I hope you all had a lovely Easter holiday and all the children feel well rested. We have reached the final term of Year 2, I can't quite believe how fast the year has gone and how much the children have come on. This week we have started fractions in maths which the children have flown through. We have also started 'The King who Banned the Dark.' in English where the children will be writing a persuasive letter.

In PSHE we have been looking at relationships, discussing what makes a good family and friendship as well as doing Dance in PE.

Year 3

3D - This week, we have started our new book in English called Egyptology. The children made a prediction on what they think the book will be about before we read it. In Art, the children have been creating and forming shapes using wire.

3T - In ART children worked with wire, bending and twisting it to create the form of a fish, they then used smaller pieces of wire to add features.

In MFL, we learnt how to say when our birthday was in French.

Year 4

4J

Children have had a great first week back after the Easter Holidays, it was wonderful hearing about all the amazing things they did. PE is still on a Tuesday (Cricket) and Friday (Tennis), please ensure that your child has their PE on and trainers for the hall if needed. 4J have started their new topic in English where they are going to write a Refugee Narrative at the end of the three weeks. Children have found adding fraction challenging but have now started to reason with confidence.

4R

The children have come back from their Easter breaks and hit the ground running. They have started their new topics in PE (Cricket and Tennis) and have begun to explore their new texts in reading and writing. The Geography topic that is being taught this half term is all about the rainforests which the children began to learn on Friday. In maths, the children are continuing with adding and subtracting fractions.

Year 5

5H

5H have made a fantastic start to the summer term. We have begun our new book in English and are excited to see what sort of adventures it contains. During maths, we have been looking at the perimeter of rectangles and solving problems based on these. We have also been practicing our assembly ready to perform next week.

5F

This week, 5F started off by practicing for our Eid assembly, which will be presented to KS2 and parents next week. In Maths, we have been focussing on perimeter and area and using our knowledge to complete reasoning and problem solving challenges. We have begun our new book in English and are excited to see what sort of adventures it contains. In PE, we have started learning about tennis and cricket and focussing on our movement and gross motor skills within those lessons. As well as this, we started our new Geography topic - Wild Waters.

Year 6

It has been a wonderful first week back for Year 6 and we have explored our new topics with great enthusiasm. In our history lesson, we explored how Birmingham was impacted by the industrial revolution and it was interesting to compare images from 1750 to 1900 to see how the landscape changed. In writing, we have been immersing ourselves in our new text, Shackleton's Journey, which re-tells the story of Ernest Shackleton's landmark expedition crossing the Antarctic from one pole to the other. This will inspire the children's upcoming writing as they write their own endurance narrative! We continue to ensure that our maths and reading groups are targeted to children's specific needs in the run up to SATs and we will be revising SPaG and arithmetic skills alongside our curriculum. Our PE days this term are Monday and Thursday.

Measles

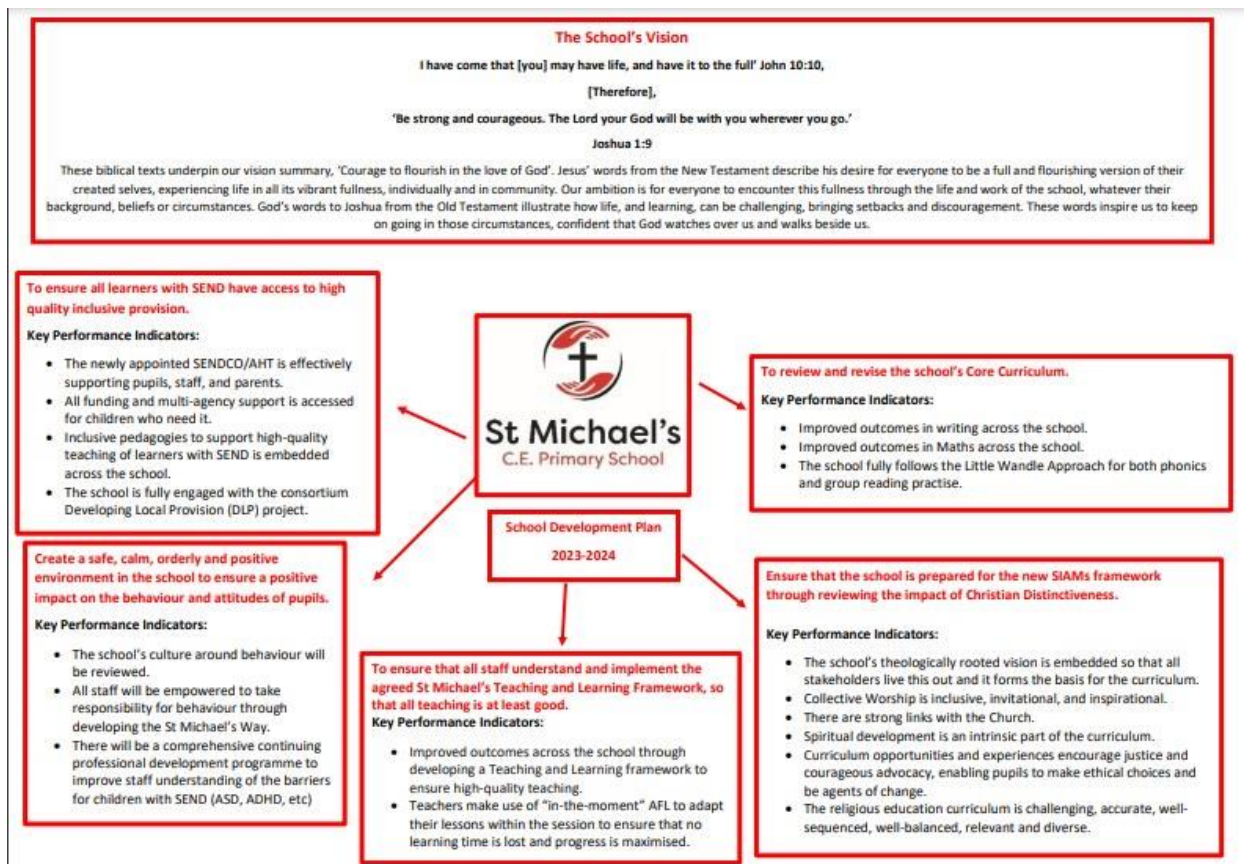
As you may be aware, across Birmingham there has been an outbreak of measles. Please read the following information which has been issued:

-
- *There's no specific medical treatment for measles, so it's important to get vaccinated as it's the best protection against becoming seriously unwell.*
 - *Measles usually starts with cold-like symptoms, followed by a rash a few days later.*
 - *You should ask for an urgent GP appointment or get help from NHS 111 if you think you or your child may have measles.*
 - *Don't go to the GP or any other healthcare setting without calling them first.*
 - *If your child has been diagnosed with measles by a doctor, they should stay off nursery or school for at least 4 days from when the rash first appears. They should also avoid close contact with babies and anyone who is pregnant or has a weakened immune system.*
 - *Parents can book a free vaccine through the GP but if a child has already been vaccinated it is very unlikely that they have measles. 'It's fine to send your child to school with a minor cough or common cold, provided they don't have a temperature'. The incubation period is the length of time it can take to develop the illness after being in contact with someone with measles. For measles, the incubation period can be up to 21 days.*
-

School Development Plan

Please click on the link below to see this year's School Development Plan.

[School Develop Plan](#)



What you need to bring to school

A reminder of what to bring to school:

✓ *A water bottle (please make sure it has your name on it). This should only have water in it and have a pop up top (not a screw top as if these fall over on the desks, they will ruin the children's work).*

✓ A school bag or bookbag.

✓ *A healthy fruit snack for breaktime (Nursery, Reception, Year 1 and Year 2 are provided with this).*

✓ *You can bring your scooter or bike to school if you wish. Please remember to wear a helmet and not to ride them whilst on school grounds.*

✓ *As always, please remember not to bring in any toys or stationery from home, unless it has been specifically requested by your teacher.*

X No non-prescribed medication. Any medication that has been prescribed must be handed by the parent/carer to the school office staff who will ask you to complete a medication form detailing permission and dosage.

Medical and Dietary Information

It is very important that we have up-to-date medical information including new Care Plans so we will be sending these out for you to review, complete and return. Any other updated health information should be sent in via the school office.

Please remember to inform the school of any changes to your child's medical or dietary needs.

Please also ensure that any prescribed medication, including an inhaler or EpiPen, is in-date and in school - it is parents responsibility to ensure this.

Free School Meals, Toast and Price Changes

All children in Year's Reception - Year 2 are entitled to a 'Universal Free School Meal'.

When a child enters Year 3 this entitlement ends. If you would like your child to receive a school dinner you will need to:

- Check you eligibility for a FSM here: [Online FSM Application \(cloudforedu.org.uk\)](https://cloudforedu.org.uk) School will be notified of the outcome of your application and proceed accordingly.*
- Top up your 'School Food United' account to ensure there are funds to pay for your child's meals. The price for a school meal for the academic year 23/24 is £2.80 per day. Remember that these need to be ordered by **8.30 am** each day.*
- We will no longer be accepting cash for toast, this will also need to be ordered each down through 'School Food United' The cost per day is 25p. Children will receive their toast at their break time between around 10.30am. Remember that these need to be ordered by **8.30 am** each day.*

- *We sent out guidance of how to create/use your 'School Food United' app via Arbor last week - if you require any further assistance please speak to a member of the school office.*
-

Birthdays

Natasha's Law came into effect on 1st October 2021. We appreciate that there may be some special times throughout the year when children may wish to bring sweets or chocolate in to share with their friends (e.g birthdays), please may we ask that children only bring in prepacked sweets such as Haribos which can then be handed out at the end of the day before children go and see their parents or guardians. Please understand that we cannot accept any homemade or individual sweets as this will not comply with Natasha's Law or current allergen requirements.

Nut Free School

A reminder that the school is a nut-free zone as several children and members of staff have severe nut allergies. Please make sure that no nuts are brought to school and please check the ingredients on packets carefully. Thank you for helping us to keep all our community safe.

School Uniform

- *White polo shirt (with/without logo).*
 - *Red sweatshirt or cardigan (with or without logo).*
 - *Grey or black trousers, skirt or pinafore.*
 - *Red and white check dress (summer).*
 - *Grey or black shorts (summer).*
 - *Black shoes.*
-



P.E Uniform

- *Red or black shorts.*
 - *White t-shirt (with or without the school logo).*
 - *Black bumps/trainers.*
 - *Black tracksuit bottoms for outdoor games in winter.*
-

Pumps are needed for indoor PE and must come in a separate bag for children to change into for the lesson. Trainers are not to be worn inside. Please make sure that your child has a pair of pumps onsite in case the weather means we need to do P.E inside.

You can also purchase a hoodie with the school logo on for P.E. from the office. This is not compulsory.



Labelling

We understand how much a new uniform and school items cost and we try our best to ensure the children look after their clothing and bags. Please label your child's clothing, bags, lunch boxes, shoes and water bottles to help us return lost items to their owner.

Contact Details

Telephone Numbers

Schools should hold two contact numbers for emergencies for each child. Please ensure these are up to date on your Arbor account.

Email Address

We communicate with parents and carers through email. Please do check your email address is up to date on Arbor.

Twitter/X

Please follow us on:

@stmichaelsb32
