



St Michael's
C.E. Primary School

Welcome to Reception!

Senior Leadership Team



Mrs S-A Roberts
Headteacher



Mr R Bhatti
Deputy
Headteacher



Mr T Immanuel
Deputy
Headteacher



Ms G Joyce
Assistant
Headteacher for
Inclusion



Mrs C Bird
Assistant
Headteacher



St Michael's
C.E. Primary School



Reception Team



Miss S Slattery
Reception Class
Teacher



Miss R Gidney
Reception Class
Teacher



Mrs P Walsh
Reception Teaching
Assistant



Miss K Humphries
Reception Teaching
Assistant



St Michael's
C.E. Primary School





St Michael's
C.E. Primary School

***Courage to Flourish in the Love of
God***

Courage to Flourish in the Love of God



Our school vision and values support building positive relationships and teach everyone how to live within both our community and as good citizens of the world.

School Prayer

God of Love ,

Bless our school and make
us strong and courageous
in everything that we do.

Help us to flourish in the
love of God.

Amen



St Michael's
C.E. Primary School



St Michael's Church



As a Church school, we have strong links with St Michael's Church and liaise closely with Reverend Ruth who visits us regularly. Reverend Ruth will visit throughout the year to lead Collective Worship.



St Michael's
C.E. Primary School



High expectations!

We want all of our children to have a good character and be successful in their:

- Relationships and behaviour
- Attendance
- Learning
- Achievements in class and extra curricular activities



St Michael's
C.E. Primary School



The role of Parents and Carers

Crucial in developing and maintaining good relationships, behaviour and successful learning and outcomes. We work with parents to:

- Take part in the life of the school
- Support the school help your child follow the school rules and achieve their best
- Build positive relationships with the school and work together so that your child receives consistent messages
- Attend all parental consultations and meetings during the year
- Celebrate your child's successes in school



St Michael's
C.E. Primary School



The importance of good attendance

- Children have the right to attend school and receive a full time education
- Good attendance gives your child the chance to achieve their best
- Attendance below 90% is classed as persistently absent (PA) - one day a fortnight being missed!
- St Michael's current PA is 18%!
- Class teachers receive a half termly update with the details of the PA children in the class

0 days off in a year 0 lessons missed	100%
2 days off in a year 10 lessons missed	99%
5 days off in a year 25 lessons missed	97%
10 days off in a year 50 lessons missed	95%
14 days off in a year 70 lessons missed	93%
20 days off in a year 100 lessons missed	90%



St Michael's
C.E. Primary School



Attendance – Fixed Penalty Notices

- Starting on August 19th, 2024, a new National Framework for Penalty Notices was introduced across England. This is a government-led initiative to create more consistency in how penalty notices are used for unauthorised absences, such as term-time holidays.
- Under the new framework:
- The penalty will remain at £80 if paid within 21 days, or £160 if paid after 21 days but within 28 days.
- If the penalty is not paid within 28 days, the local authority will have to decide whether to prosecute for the original offence or withdraw the notice.
- This change is being made by the Department for Education, not by our school.



St Michael's
C.E. Primary School



ATTENDANCE

WHAT THE NEW RULES MEAN FOR ME

1

I'm a single parent of one child and we want to go on holiday for a week.

Your holiday will not be authorised and you must talk to the school before you book anything. Because your child will miss 5 school days you will be given a penalty notice fine. The fine is £160 but if you pay it in 21 days it will be reduced to £80.

£160



2

FOR EVERY CHILD A PENALTY IS GIVEN.



+ £160 + £160 + £160 + £160

4 children & 1 parent = £640

Reduced to £320 if paid in 21 days

IRREGULAR ATTENDANCE

10 IN 10

5

If your child is absent for 10 or more sessions in 10 weeks and their absences are unauthorised. The school will consider prosecution.

1 Day = 2 Sessions

3

FOR A FAMILY OF TWO PARENTS



+ £160 + £160 + £160 + £160

4 children & 2 parents =
£1280

Reduced to £640 if paid in 21 days

If in any period of not more than 3 years, your child has a 2nd and 3rd leave of absence or pattern of irregular attendance...

4

2ND TIME

2 parents and
1 child = £320
2 children = 640
3 children = 960
4 children = 1280

No discount for early payment



3RD TIME

A penalty notice fine will not be given. Instead, your case will be taken to court.
A magistrate can fine each parent £2500 for each child
1 parent & 4 children = £10,000
2 parents & 4 children = £20,000



St Michael's
C.E. Primary School



The St Michael's Way. Our Behaviour Curriculum

At St Michael's, we develop children's character and Christian spirit through our behaviour curriculum, called, 'The St Michael's Way'.

Staff teach weekly behaviour lessons focusing on a different aspect of the Behaviour Curriculum.

Teachers will demonstrate these behaviours and ensure pupils have time to practise these.



St Michael's
C.E. Primary School



Our School Rules



St Michael's
C.E. Primary School

At St Michael's CE Primary School, our learning behaviours are:

Be Ready

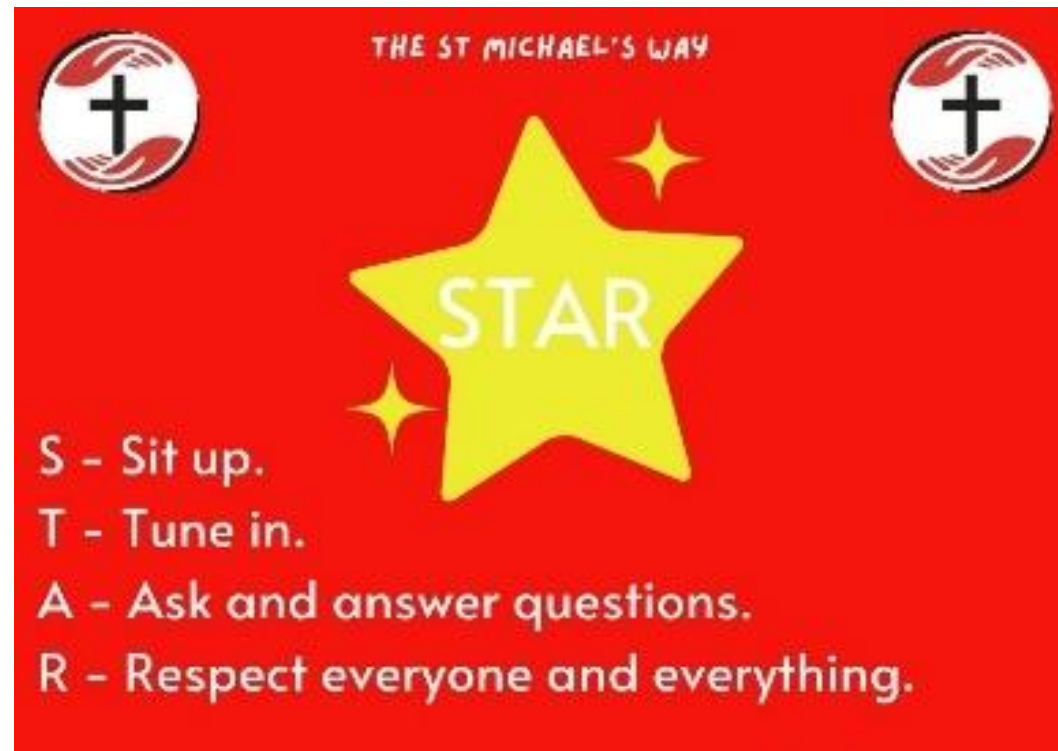
Be Respectful

Be Responsible



STAR Behaviour

Children will be encouraged to exhibit STAR behaviours. When pupils are noticed for exhibiting the star behaviours, they will move up the Zone Board.



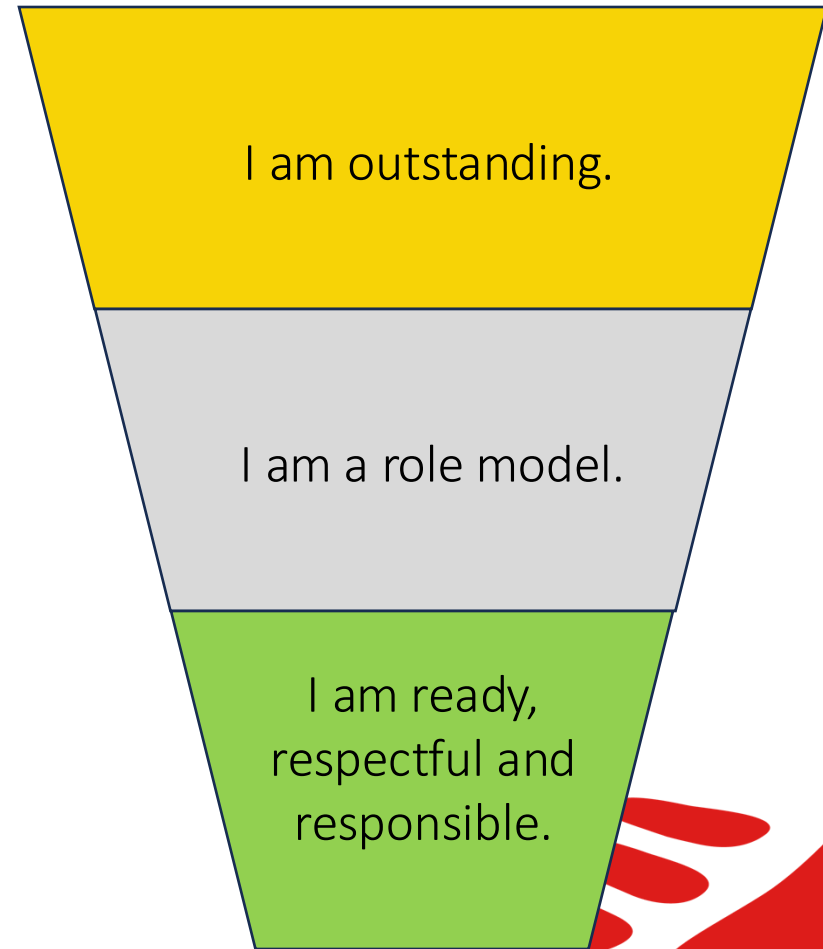
St Michael's
C.E. Primary School



Zone Board

Each classroom has a behaviour board which contains a Zone Board. Each child starts in the green zone and can move up the Zone Board for showing positive behaviour.

Each new day is a fresh start.



St Michael's
C.E. Primary School

Staff will explicitly teach the children the appropriate voice levels for different activities.

Voice Levels



St Michael's
C.E. Primary School

When moving around the school building children should demonstrate appropriate behaviour by following WOW Walking.

Wow Walking



St Michael's
C.E. Primary School



Children are expected to use Marvellous Manners at all times both in and out of the classroom.

Marvellous Manners



#1 Say 'please' when you are asking for something.

#2 Say 'thank you' to show gratitude.

#3 Let any waiting adults through a doorway.

#4 Say 'good morning/afternoon' to adults if spoken to.

#5 Wait patiently for an adult to speak before speaking.

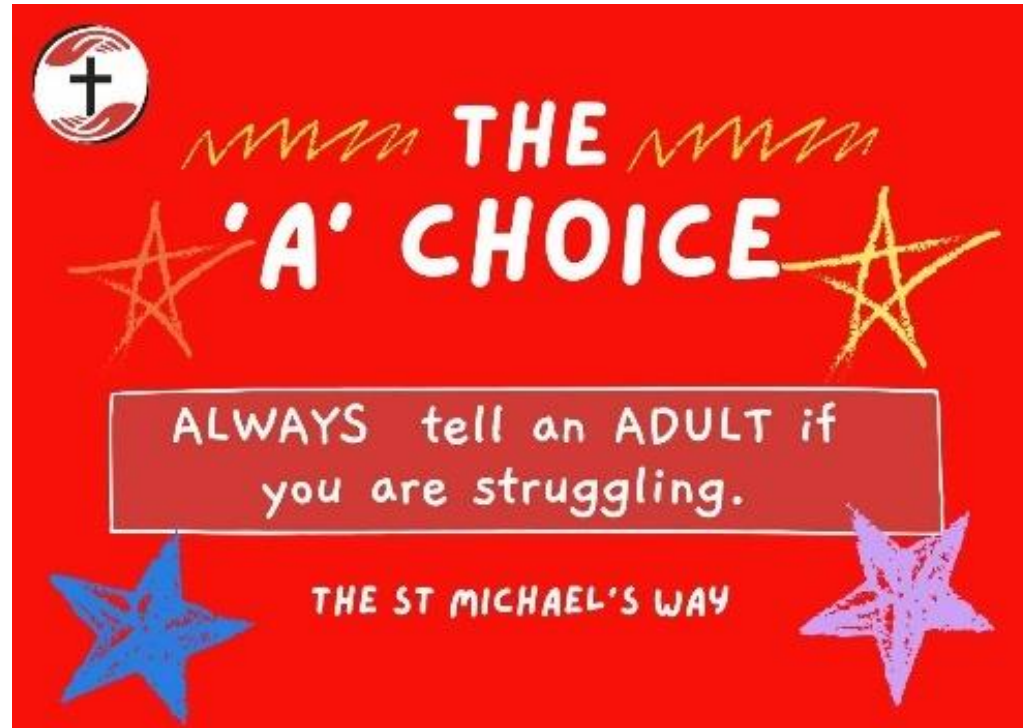
THE ST MICHAEL'S WAY



St Michael's
C.E. Primary School

The A Choice

We ask children to tell an adult if they are struggling (this may be with another pupil) or with their own behaviour. We ask them to make the 'A' choice.



St Michael's
C.E. Primary School



Recognition and Rewards

Verbal and non-verbal praise for choices

Use of class Zone Board for learning behaviours

Phone calls home to parents/carers

Praise postcard from class teachers or senior leaders

Weekly Celebration Worship

Half-termly Headteacher Awards

Pupil of the Month

Team Points



St Michael's
C.E. Primary School

**IF YOU REWARD CHILDREN
FOR GOING OVER AND ABOVE
THEN THERE IS NO LIMIT TO
THEIR EXCELLENT
BEHAVIOUR. [#ADULTSCHANGE](#)**

Team Points

- Children from every class are allocated a Team. The team system is an effective way of promoting team spirit and encouraging children to aim high and take pride in achieving Team Points.
- The Team who has earned the most points over a term will be given a choice of reward.
- There will be winning team each half term, who will be able to come to school in their team colours on the last Thursday of the half term. Parents will be informed via text.



Biles
St Michael's
C.E. Primary School



Zephaniah
St Michael's
C.E. Primary School

Managing and Modifying Negative Behaviour

"Inevitability of the consequence, not the severity"

"What you ignore you permit and what you permit you condone"

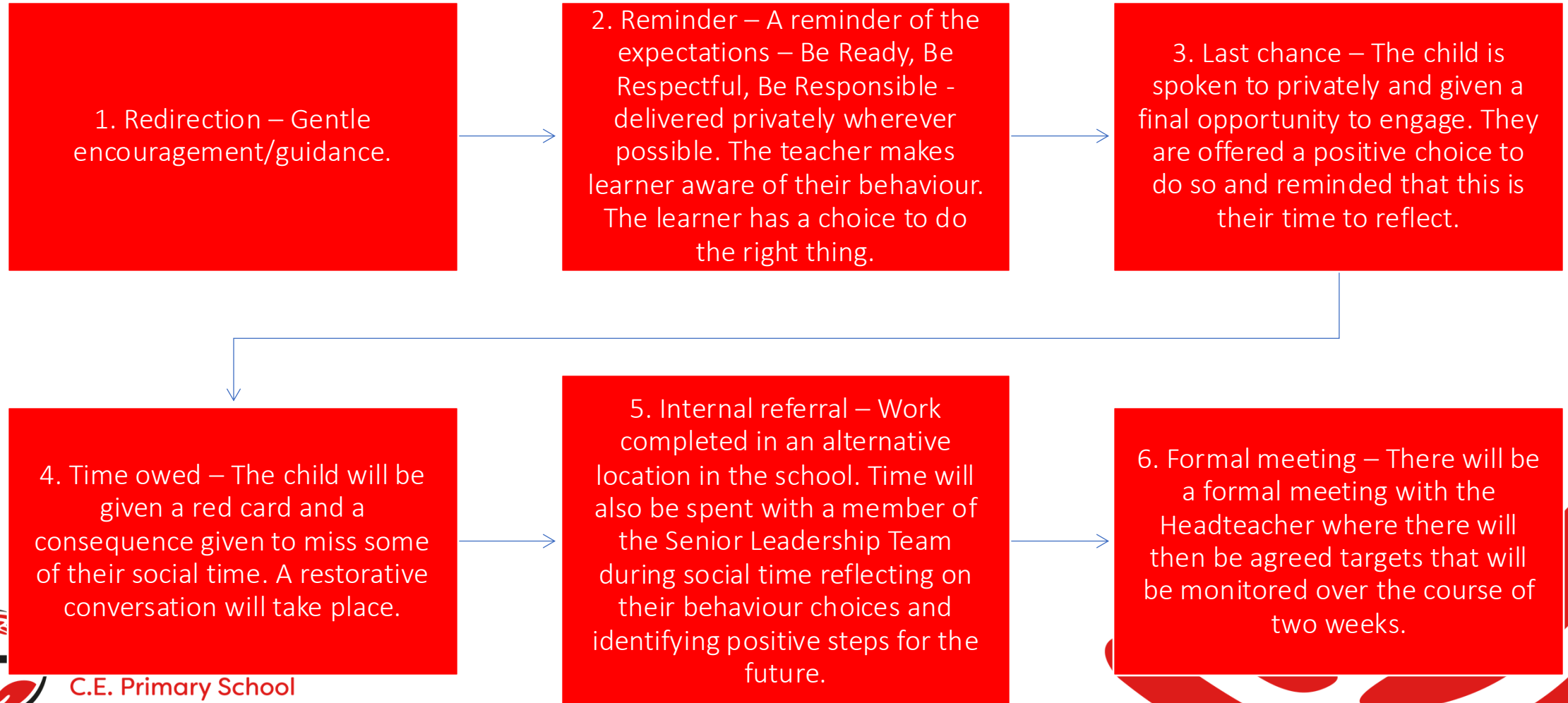
Tom Bennett



St Michael's
C.E. Primary School



A Stepped Approach



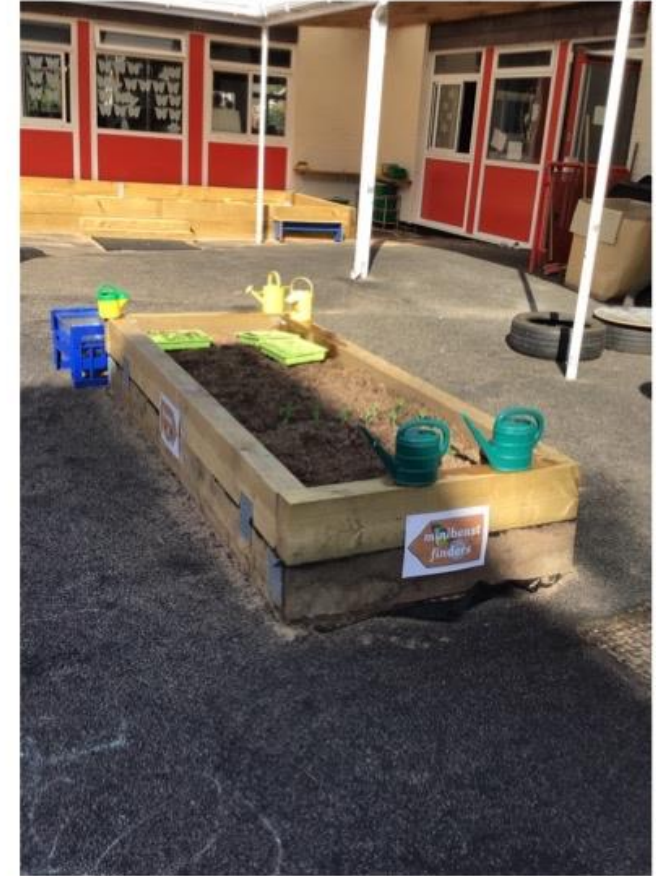
Reception Year at St Michael's



St Michael's
C.E. Primary School



Reception Year at St Michael's



St Michael's
C.E. Primary School



Reception Year at St Michael's



St Michael's
C.E. Primary School



Reception Hours

Monday– Friday

8:35 am – 15:15 pm

Please drop off your child at the main school gate on either Nantmel Grove or Scotland Lane. Please collect your child from the KS1 Playground.



St Michael's
C.E. Primary School





Areas of Learning

The EYFS statutory framework forms the basis of learning in EYFS and is supported by Birth to Five guidance. The curriculum is delivered through the seven areas of learning.

There are three prime areas and four specific areas.

Each area is carefully planned and delivered by staff to maximise learning and to provide a range of experiences.

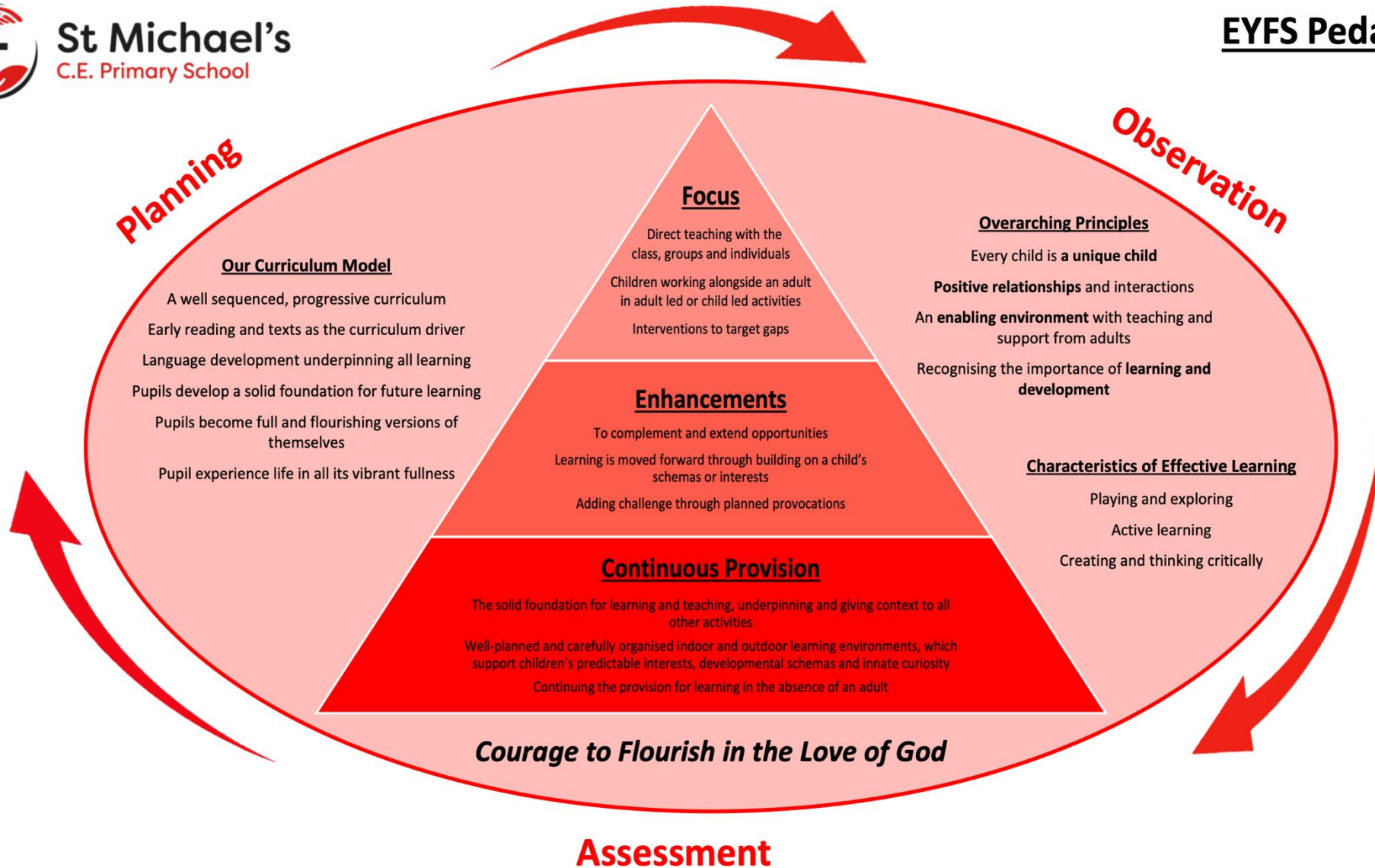


Our Early Years Curriculum

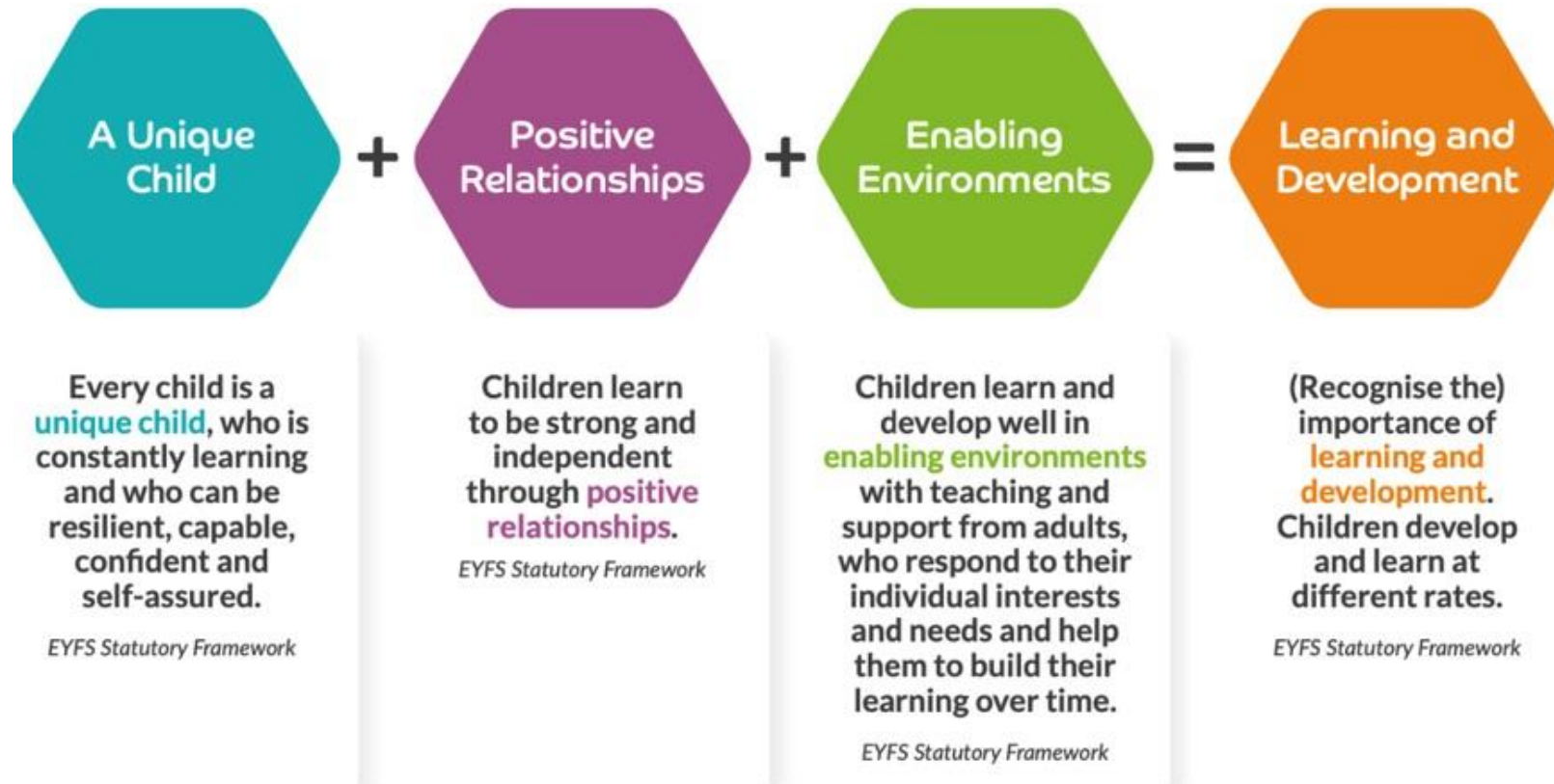


St Michael's
C.E. Primary School

EYFS Pedagogy



Our Early Years Curriculum





Getting ready for Reception



You can prepare your child for Reception by...

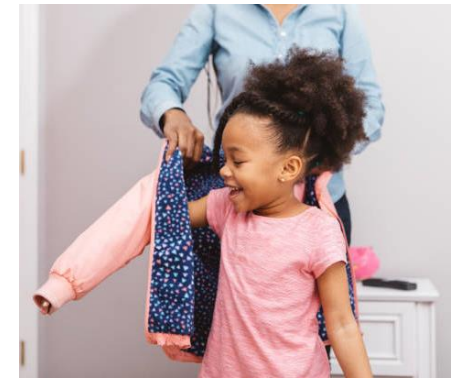
- Training your child to look after their toileting needs.
- Supporting your child to dress themselves, including putting on and taking off shoes.
- Playing games that involve turn taking.
- Reading stories to your child and encouraging them to 'read' to you.
- Allowing them lots of opportunities to draw, colour and paint trying hard to use a pincer grip.



St Michael's
C.E. Primary School



- Encouraging your child to name and describe shapes that they see around them.
- Bringing counting and number into everyday life.
- Singing songs and moving to music.
- Encouraging your child to put their coat on independently including zipping up the zip.
- Packing their school bag.
- Playing throwing and catching games.



St Michael's
C.E. Primary School



Uniform

-
- White polo shirt (with/without logo).
 - Red sweatshirt or cardigan (with or without logo).
 - Grey or black trousers, skirt or pinafore.
 - Red and white check dress (summer).
 - Grey or black shorts (summer).
 - Black shoes.
-



St Michael's
C.E. Primary School



Uniform

Uniform is available to order from Kids Essentials in Northfield.

<https://kidsessentialsschoolwearbirmingham.co.uk/>



St Michael's
C.E. Primary School



P.E Kit

In the Autumn Term Reception children will start to take part in P.E lessons in the main hall or outdoors. For these lessons all children must come into school wearing their PE kit. For P.E children are allowed to wear shorts, a polo shirt or t. shirt and pumps. A suitable tracksuit in school colours can be worn outdoors.

Pumps are needed for indoor PE and must come in a separate bag for children to change into for the lesson. Trainers are not to be worn inside.

PE Kit - Boys and Girls

Red or Black Shorts

White T-Shirt with Logo

Black Pumps/Trainers

Tracksuit bottoms/warm tops needed for outdoor games in winter



St Michael's
C.E. Primary School

Labelling

We understand how much a new uniform and school items cost and we try our best to ensure the children look after their clothing and bags. Please label your child's clothing, bags, lunch boxes, shoes and water bottles to help us return lost items to their owner.



St Michael's
C.E. Primary School



Spare Clothes

Reception is fun but some of the activities can get messy so please can you ensure that your child has a bag of spare clothes with them which can be left on your child's peg. They can be everyday clothes or spare uniform.

We will encourage children to wear aprons and waterproofs but as we try to develop independence, we are sure you will have messy but happy children leaving school!



St Michael's
C.E. Primary School



Water and Snacks

You are asked to send in a water bottle each day and children are encouraged to drink throughout the day. The bottles are kept in a basket in the classroom. Please label your child's bottle to ensure they can find it.

They are offered water or milk and a piece of fruit. You can order your child toast through School Fund united for 25p per day.



St Michael's
C.E. Primary School



Lunch

All children in Reception are entitled to Universal Free School Meals. You will need to order the school meal from School Fund United. If you wish to provide your child with a packed lunch the lunch boxes should be **nut free and kiwi free** to ensure there are no issues with allergies. A non-fizzy drink should accompany the packed lunch.



St Michael's
C.E. Primary School



SEND

Please speak to our Inclusion Lead, Ms. Joyce, if you would like to discuss your child's individual needs.



St Michael's
C.E. Primary School



School Development Plan

To enhance the teaching, learning and assessment experiences for pupils with Special Educational Needs and Disabilities.

Key Performance Indicators:

- Pupils with Special Educational Needs and Disabilities at St Michael's CE Primary School will experience personalised and effective teaching, learning, and assessment practices tailored to their individual needs.
- The school is fully engaged with the consortium Developing Local Provision (DLP) project.
- Classroom walls reflect diversity and inclusion
- Resources are easily accessible so that children are supported to access the curriculum.
- Reduced persistent absence rate for all SEND pupils
- Reduced number of exclusions / suspensions
- Improved percentage of all SEND pupils achieving age related expectations in Reading in Years 2 and 6.
- Improved reading ages for children with SEND
- Specialist provision that facilitates personalised expertly delivered a curriculum for those children with ASC.



School Development Plan
2024-2025

To review and adapt the core curriculum to address the diverse learning needs of all students – focus on reading, writing and maths.

Key Performance Indicators:

- Improved outcomes in reading, writing and maths across the school.
- Improved outcomes in the Year 4 Multiplication Check.
- The diverse learning needs of all students, including those with SEND and disadvantaged backgrounds, will be addressed effectively, leading to improved engagement, progress, and outcomes across these key subject areas.
- The school will see increased student achievement, confidence, and overall well-being, creating a more inclusive and supportive learning environment for all learners.

To enhance the provision and delivery of foreign languages, music and computing.

Key Performance Indicators:

- Updated and revised curriculum and scheme of work in line with National Curriculum expectations.
- Identification of areas for improvement that feed into professional development cycle.
- Improved outcomes in these subject areas.

To ensure that the roles, responsibilities and accountability of all leaders (HT, DHTs, AHTs, Phase Leaders) are clear to all.

Key Performance Indicators:

- A structured accountability framework will further develop a culture of transparency and ownership among leaders, ultimately benefiting the entire school community.
- Leaders will have an even better understanding of their duties, leading to increased efficiency and effectiveness in driving the school towards its goals.

To ensure current teaching methods and practices impact effectively on pupil outcomes through the development of a comprehensive Teaching and Learning Framework.

Key Performance Indicators:

- Pupils at St Michael's CE Primary School will benefit from improved teaching practices that are tailored to their needs, leading to enhanced learning outcomes and overall academic achievement
- The systematic review, revision, and monitoring of teaching methods will ensure that all pupils, including those with SEND and those from disadvantaged backgrounds, receive high-quality education that prepares them for success in their future endeavours.
- All teachers are judged to be "good" or better, including all ECTS meeting career-stage expectations.

To review the impact of the school's Christian distinctiveness.

Key Performance Indicators:

- Quality of teaching in RE will be at least good.
- Through its vision and practice, the school is living up to its foundation as a Church school and is enabling pupils and adults to flourish.
- The culture encourages justice and courageous advocacy, enabling pupils to make ethical choices and to be agents of change.
- Eco award achieved.
- Spirituality opportunities within the curriculum enhances and enriches individuals' spiritual development.
- The religious education curriculum is challenging, accurate, well sequenced, well-balanced, relevant, and diverse.
- Assessment will be used to inform adaptive teaching to ensure good outcomes for all.



We look forward to working in partnership with you to ensure that your child has a successful year and achieves their very best!



St Michael's
C.E. Primary School

